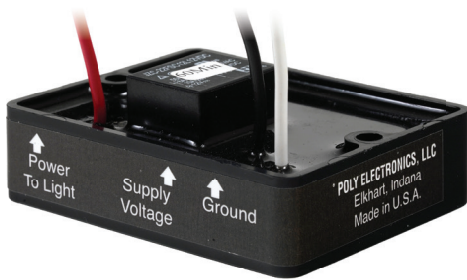


Battery Saver™ CARGO DOME LIGHT TIME DELAY

Features:

- **Delay Off Timer Prevents Dead Batteries**
- **Use Our Standard Timing Delay Or Choose Your Own Factory Preset Delay.**
- **Durable Waterproof Ipx6 Tundra To Tropics Operation**
- **Easy 3-Wire Install No Nonsense Operation**
- **Turn Lights On/Off From Multiple Switches**
- **DLM-10 Motion Sensing in a Compact Design**



DL-10 10 Amp

DL-10	Part: 2509
Nominal Supply Voltage	12 volts
Max Continuous Carry	10 Amps
Operating Temp Range	-40°F - 185°F
Delay	10, 15, 20, 30, 60 Min
Dimensions (L x W x H)	2.5" x 2" x 1"
Motion Activation	NO

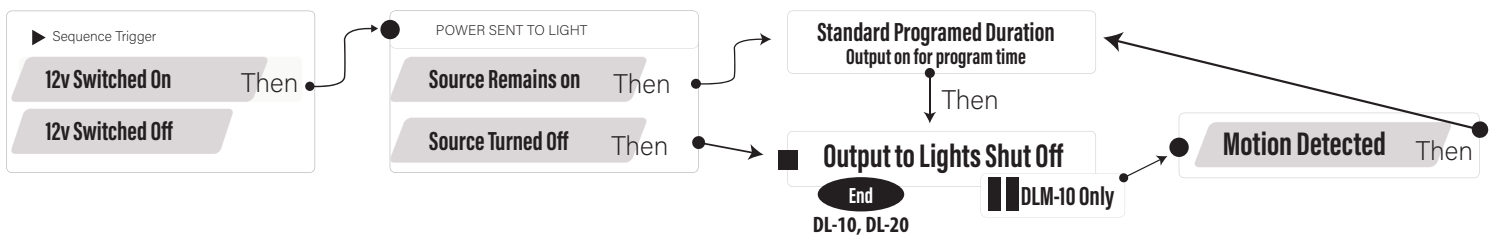
DL-20 20 Amp

DL-20	Part: 2510
Nominal Supply Voltage	12 volts
Max Continuous Carry	20 Amps
Operating Temp Range	-40°F - 185°F
Standard Delay	10, 15, 20, 30, 60 Min
Dimensions (L x W x H)	2.5" x 2" x 1"
Motion Activation	NO

DLM-10 10 Amp - Motion Sensing

DLM-10	Part: 3109
Nominal Supply Voltage	12 volts
Max Continuous Carry	10 Amps
Operating Temp Range	-40°F - 185°F
Delay	10, 15, 20, 30, 60 Min
Dimensions (L x W x H)	2.5" x 2" x 1.375"
Motion Activation	YES

Function:



Design it. Source it. Manufacture it. Stock it. Ship it.

PolyElectronics.us



4400 Wyland Dr
Elkhart, IN, 46516
574.522.0246
info@polyelectronics.us
EST 1973

Battery Saver™

CARGO DOME LIGHT TIME DELAY

TECHNICAL INFORMATION

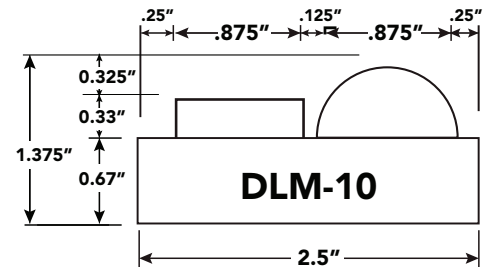
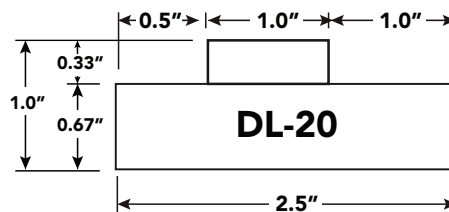
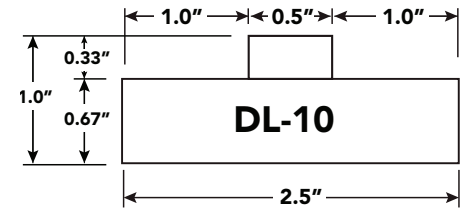
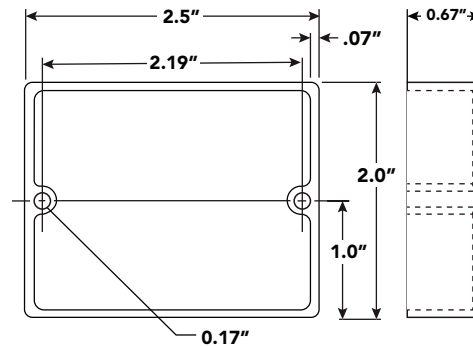
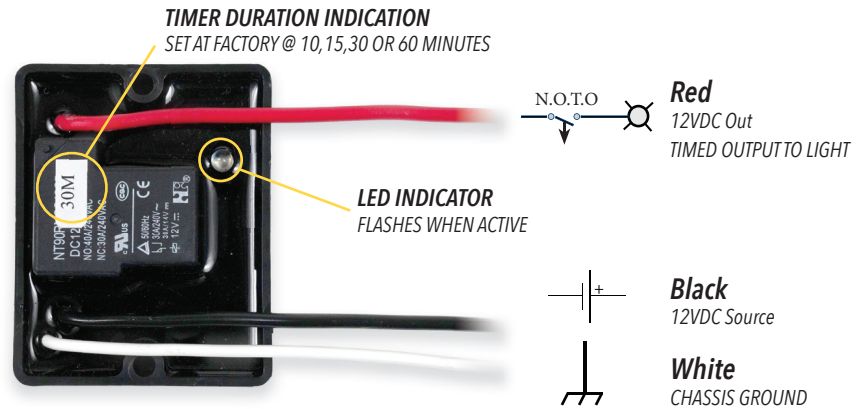
Scenario: Cargo light switch was left on, or door left ajar. Battery is now drained and vehicle won't start.

Solution: Decrease downtime and vehicle battery maintenance and jump starts with a Battery Saver Control module.

The cargo dome light time delay module, DL-10 (10 Amp) and DL-20 (20 Amp) is a timer used in series with a 12 VCD dome light on a cargo body and your desired switching method.

When the switch controlling the dome is turned on, or door is ajar, the timer will turn on the dome light for a period of time preset at the factory, then go off.

This prevents overnight discharge due to far too common operator error.



DL-10/DL-20: Specify time delay when ordering: Delay _____
 10, 15, 30, 45 or 60 Min. Special order times available upon request.
 To reset light, cycle power Off/On.

DLM-10: Max sensing range 15 feet. Light stays on for 10 min.
 Light remains off until motion is detected.



● PolyElectronics.us

4400 Wyland Dr
 Elkhart, IN, 46516
 574.522.0246
 info@polyelectronics.us
 EST 1973



Advanced Electronic Custom Controls Made Easy.

- FAST** - 4 weeks from first contact to product implementation.
- RELIABLE** - Latest in precision equipment delivers minimal defects.
- VALUE** - Design and Service at a fraction of the cost.

